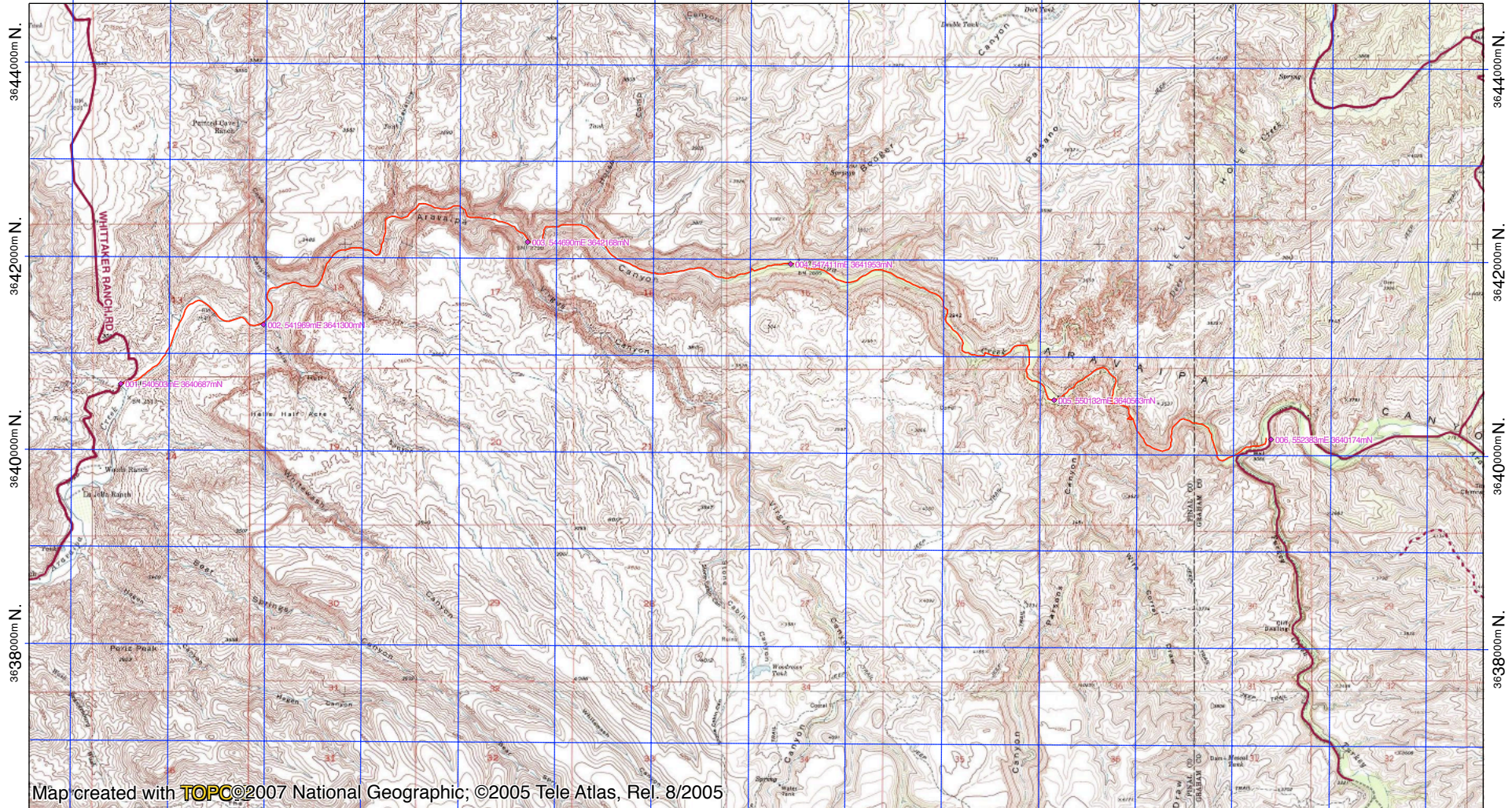


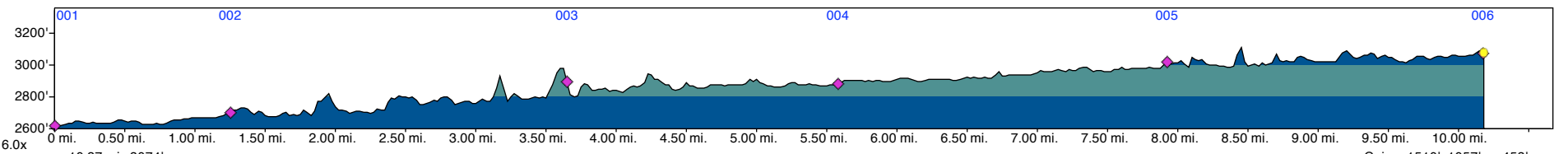
TOPO! map printed on 03/07/08 from "aravaipa.tpo"

540000m E. 541000m E. 542000m E. 543000m E. 544000m E. 545000m E. 546000m E. 547000m E. 548000m E. 549000m E. 550000m E. 551000m E. WGS84 Zone 12S 540000m E.

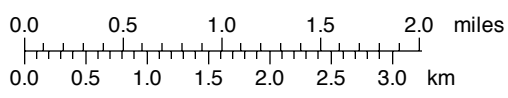


Map created with **TOPC**©2007 National Geographic; ©2005 Tele Atlas, Rel. 8/2005

540000m E. 541000m E. 542000m E. 543000m E. 544000m E. 545000m E. 546000m E. 547000m E. 548000m E. 549000m E. 550000m E. 551000m E. WGS84 Zone 12S 540000m E.



Gain: +1510' -1057' = +453'



TN ↑ MN
10.5°
03/07/08