



7 Electric Sites



50 Developed Sites



3 Group Shelters



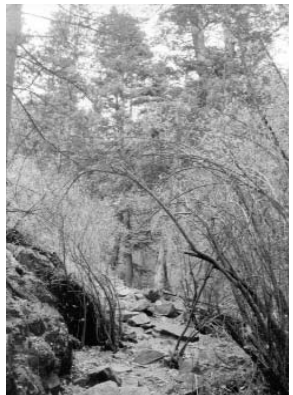
Handicap Accessible  
Tables & Grills



Handicap Accessible  
Rest Rooms



Hiking Trails



# Hyde Memorial State Park



Beautiful scenery, a quiet natural setting, and easy access make Hyde Memorial State Park a favorite picnic area, campground, respite, and base camp for excursions into the surrounding Santa Fe National Forest.

The unique beauty and natural wonders at Hyde Park make it an unforgettable reminder of nature's complexity. Sledding, snow shoeing, and cross-country skiing are delightful winter activities.

Located in the Sangre de Cristo Mountains, the park is vegetated with dense stands of evergreens, as well as aspen and shrubs. A natural refuge for wildlife, the park provides the opportunity for the quiet and cautious visitor to view deer, raccoon, fox, coyote, squirrels, and numerous species of butterflies and birds.

There are more than 50 camping and picnicking sites nestled throughout the park. Water taps service each group of campsites. Numerous three sided Adirondack shelters are available off the main road, in addition to seven sites with electric hookups.

Three attractive large group picnic shelters and a remodeled lodge for groups of 75 to 150 are used for weddings, reunions, retreats, and conferences. A large playground is located in the central section of the park.

## Park Information

### Land

350 acres

### Elevation

8,500 feet

### Precipitation

24 inches rainfall

125 inches snowfall



### Gate Hours

8 a.m. - 11 p.m.



### Emergency Numbers

#### Hyde Park

(505) 983-7175

#### State Police

(505) 827-9301

#### Sheriff

(505) 428-3720

#### Fire & Ambulance

(505) 428-3730



## Visit us on the web at [www.nmparks.com](http://www.nmparks.com)

New Mexico State Parks

P.O. Box 1147, Santa Fe, NM 87504 • (505) 476-3355 • (888) NMPARKS

## How to get there

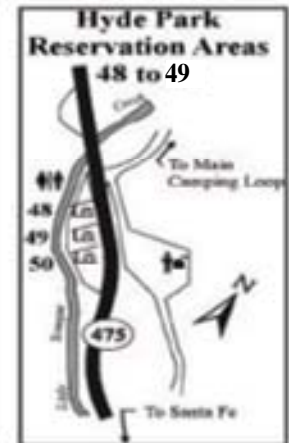
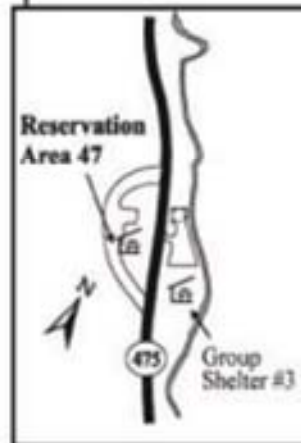
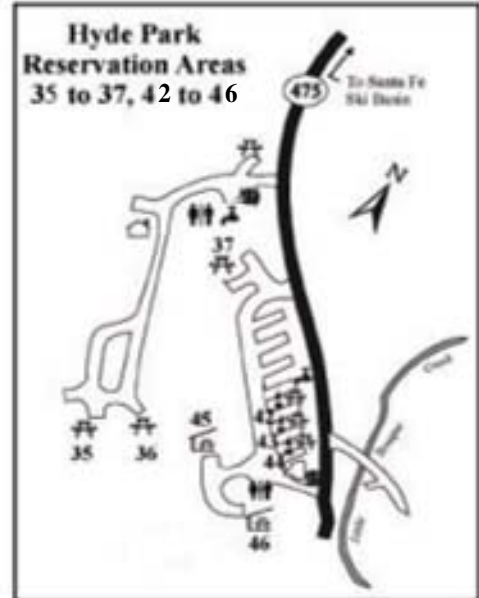
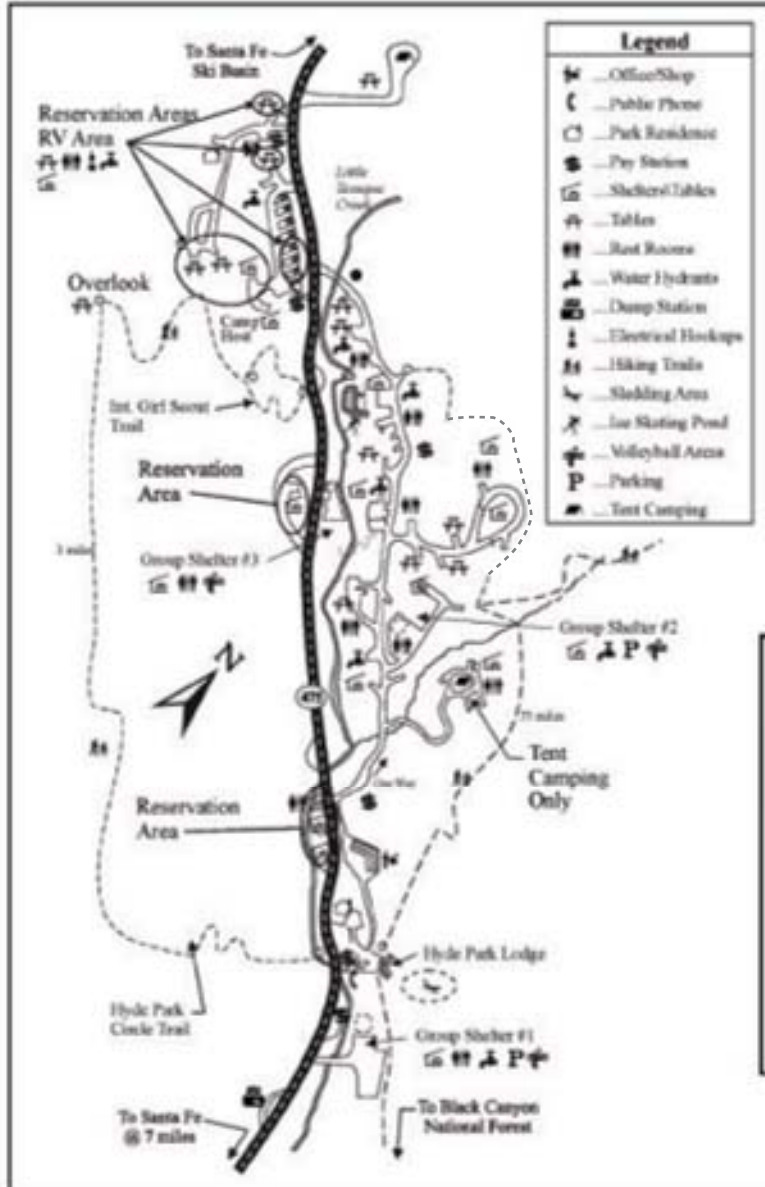
Hyde Memorial State Park is eight miles northeast of Santa Fe Plaza via Hyde Park Road.

# Hyde Memorial State Park



740 Hyde Park Rd., Santa Fe, NM 87504 • (505) 983-7175 • Fax (505) 983-2783

## Campgrounds



Make your reservation today at  
**[www.nmparks.com](http://www.nmparks.com)**  
 or call **(877)NM-4-RSVP**

## PARK FEES

### Day Use

Per Vehicle	\$5
Bicycle Walk-in	Free
Bus	\$15

### Annual Day-Use-Permit

Valid full year from purchase month	
All Parks	\$40
Resident 100%	
disabled veteran	free

### Overnight Camping

Primitive Site	\$8
Developed Site	\$10
Electrical Hookup	\$4
Sewage Hookup	\$4
Water Hookup	Free

### Annual Camping Pass

Valid full year from purchase month	
NM Resident	\$180
Senior NM Resident (62+)	\$100
Disabled NM Resident	\$100
Out -of- State	\$225